



ERA-MIN2

RESEARCH & INNOVATION PROGRAMME ON RAW MATERIALS  
TO FOSTER CIRCULAR ECONOMY

## ERA-MIN Joint Call 2019

RAW MATERIALS FOR SUSTAINABLE DEVELOPMENT  
AND THE CIRCULAR ECONOMY

### CALL TEXT

Link to [«ERA-MIN2 Call»](#)

Link to the [Electronic Proposal Submission System](#)

For further information contact the Joint Call Secretariat:

[eramin@fct.pt](mailto:eramin@fct.pt)

Ana Luísa Lavado (+351) 213 924 396

Dina Carrilho (+351) 213 924 381

FCT - Fundação para a Ciência e a Tecnologia  
Portugal

## Table of Contents

1. About ERA-MIN 2.....	3
2. Participating Funding Organisations and budgets .....	4
3. Important dates.....	5
4. Scope and topics of the Call .....	5
5. Who may apply.....	10
6. What do we fund.....	11
7. Eligibility criteria .....	12
8. Evaluation criteria and procedures .....	13
9. How to apply .....	15
10. Terms and conditions for grant agreement .....	16
11. Open Access and Open Data .....	17
APPENDIX I Sub-topic areas for research .....	18
APPENDIX II Technology Readiness Level (H2020 definition) .....	21
APPENDIX III Definitions .....	22
APPENDIX IV National/regional funding regulations.....	23



## 1. About ERA-MIN 2

**ERA-MIN 2** is a global, innovative and flexible pan-European network of research funding organisations, supported by EU Horizon 2020, and builds on the experience of the FP7 ERA-NET ERA-MIN (2011 to 2015).

**ERA-MIN 2** aims to support the European Innovation Partnership on Raw Materials, the EU Raw Materials Initiative and further develop the raw materials sector in Europe through funding of transnational research and innovation (R&I) activities. This will be achieved through calls designed and developed specifically for the non-energy, non-agricultural raw materials sector. The network will address four key objectives:

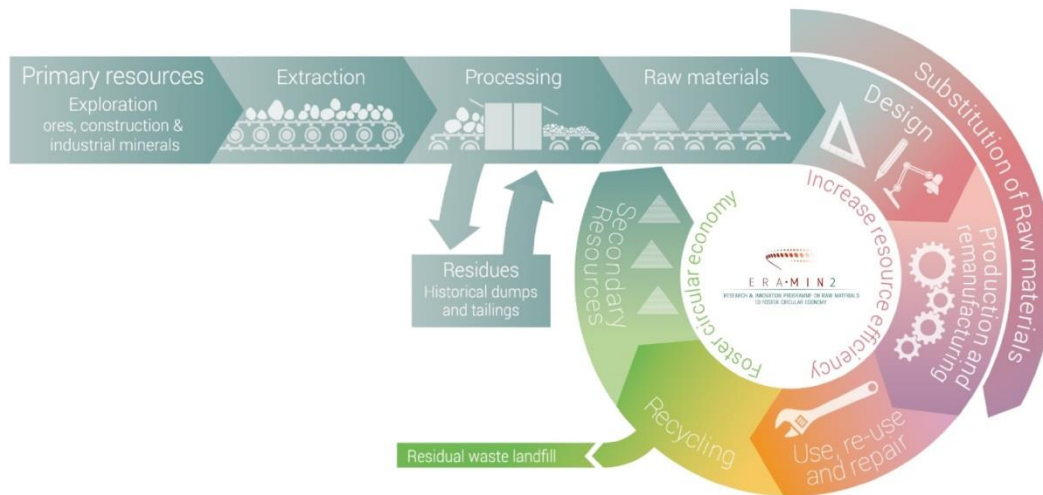
- Support and promote R&I cooperation in Europe
- Reduce fragmentation of R&I funding in the area of non-energy, non-agricultural raw materials across Europe and globally
- Provide a pan-European support network and financial resources to improve synergies, coordination and collaboration
- Improve the efficiency and impact of human and financial investment in R&I activities in the area of Raw Materials.

The **ERA-MIN 2** consortium consists of 21 funding organisations from 11 EU countries and 2 EU regions (*Hermesfonds – Belgium/Flanders; FWO – Belgium/Flanders; Business Finland – Finland; ADEME – France; ANR – France; JUELICH – Germany; GSI – Ireland; MIUR – Italy; NCBR – Poland; FCT – Portugal; UEFISCDI – Romania; CDTI – Spain; ICE – Spain/Castilla y León; AEI – Spain; MIZS – Slovenia; Vinnova – Sweden*), one EU Associated country (*TUBITAK – Turkey*), and four non-EU countries (*SGCTeIP – Argentina; Finep – Brazil; CONICYT – Chile; DST - South Africa*). **Please note that for the Joint Call 2019 not all Funding Organisations are participating, and some additional Funding Organisations have been added (see Table 1).**

**ERA-MIN 2** is supporting the EU's transition to a Circular Economy by addressing topics which are aiming at retaining the value of the raw materials that are used in products and returning them into the product cycle at the end of their use, keeping in mind the need for a sustainable and responsible industrial supply of primary resources to feed the circular economy.

**ERA-MIN 2** will cover the entire raw materials value chain, from sustainable exploration, exploitation, processing, substitution of critical raw materials and resource efficient production to short-term economic feasible and low environmental impact recycling.





**Fig. 1: ERA-MIN 2 view on Raw materials within the circular economy.**

The Joint Call 2019 is the third joint transnational call of ERA-MIN 2. Information and statistics on the projects funded in the two first joint calls are available at <https://www.era-min.eu/results>.

## 2. Participating Funding Organisations and budgets

19 Funding Organisations have agreed to allocate national/regional budgets for the Joint Call 2019, see table 1 below. The total indicative call budget is € 10 303 000.

**Table 1. Participating Funding Organisations.**

Country /Region	Funding Organisation	Contact person (s)	E-mail (s)	Budget (Euro)
Belgium/ Brussels	Innoviris	Beata BIBROWSKA	<a href="mailto:bbibrowska@innoviris.brussels">bbibrowska@innoviris.brussels</a>	500 000
Belgium/ Flanders	FWO	Toon MONBALIU	<a href="mailto:eranet@fwo.be">eranet@fwo.be</a>	200 000
Belgium/ Flanders	Hermesfonds /VLAIO	Elsie De CLERCQ	<a href="mailto:elsie.declercq@vlaio.be">elsie.declercq@vlaio.be</a>	1 000 000
Belgium/ Wallonia	SPW-Wallonia	Pierre DEMOITIE	<a href="mailto:pierre.demoitie@spw.wallonie.be">pierre.demoitie@spw.wallonie.be</a>	300 000
Canada/ Québec	FRQNT	Laurence Martin GOSSELIN	<a href="mailto:Laurence.MartinGosselin@frq.gouv.qc.ca">Laurence.MartinGosselin@frq.gouv.qc.ca</a>	390 000
Chile	CONICYT	Andrea ORTIZ	<a href="mailto:acibotti@conicyt.cl">acibotti@conicyt.cl</a>	273 000
Czech Republic	TA CR	Kristina NEHILČOVÁ	<a href="mailto:kristina.nehilcova@tacr.cz">kristina.nehilcova@tacr.cz</a>	1 000 000
Finland	Business Finland	Kari KESKINEN	<a href="mailto:kari.keskinen@businessfinland.fi">kari.keskinen@businessfinland.fi</a>	1 000 000





France	ADEME	Rachel BAUDRY	<a href="mailto:rachel.baudry@ademe.fr">rachel.baudry@ademe.fr</a>	500 000
France	ANR	Massimiliano PICCIANI	<a href="mailto:massimiliano.picciani@anr.fr">massimiliano.picciani@anr.fr</a>	500 000
Greece	GSRT	Michael KOTSIAS	<a href="mailto:m.kotsias@gsrt.gr">m.kotsias@gsrt.gr</a>	500 000
Poland	NCBR	Dominika MICKIEWICZ	<a href="mailto:dominika.mickiewicz@ncbr.gov.pl">dominika.mickiewicz@ncbr.gov.pl</a>	600 000
Portugal	FCT	Ana Luísa LAVADO, Dina CARRILHO	<a href="mailto:Analuisa.lavado@fct.pt">Analuisa.lavado@fct.pt</a> <a href="mailto:Dina.Carrilho@fct.pt">Dina.Carrilho@fct.pt</a>	500 000
Romania	UEFISCDI	Mihaela MANOLE	<a href="mailto:mihaela.manole@uefiscdi.ro">mihaela.manole@uefiscdi.ro</a>	600 000
Slovakia	SAS	Martin Novák Zuzana Panisová	<a href="mailto:mnovak@up.upsav.sk">mnovak@up.upsav.sk</a> <a href="mailto:panisova@up.upsav.sk">panisova@up.upsav.sk</a>	120 000
Slovenia	MIZS	Doroteja ZLOBEC	<a href="mailto:Doroteja.Zlobec@gov.si">Doroteja.Zlobec@gov.si</a>	420 000
South Africa	DST	Toto MATSHEDISO	<a href="mailto:Toto.matshediso@dst.gov.za">Toto.matshediso@dst.gov.za</a>	400 000
Sweden	Vinnova	Susanne GYLESJÖ	<a href="mailto:susanne.gylesjo@vinnova.se">susanne.gylesjo@vinnova.se</a>	500 000
Turkey	TUBITAK	Hale AY	<a href="mailto:hale.ay@tubitak.gov.tr">hale.ay@tubitak.gov.tr</a>	1 000 000

### 3. Important dates

The following dates apply for this Call for R&I proposal:

Call text publication	November 15, 2019
Call for proposals opens	November 28, 2019
Call for proposals closes	March 12, 2020 at 17:00 CET
Communication of results to non-eligible applicants	April 16, 2020
Communication of Call results	June 30, 2020
Recommended latest date for project start	December 1, 2020

### 4. Scope and topics of the Call

The **scope** of the Joint Call is needs-driven research on non-energy, non-agricultural raw materials addressing one or several areas of the circular economy, as shown in Figure 1 above. As an overarching objective the proposed research should clearly demonstrate potential to promote the sustainable and responsible supply, processing, production and consumption of primary and secondary raw materials in a circular economy.

Proposals should deliver convincing arguments on the potential impact of their innovation and research on the efficient supply, processing and use of raw materials. They should be able to quantify



the expected impact using appropriate metrics and life cycle thinking. A specific work package on the follow up of these metrics should be considered in order to steer the project into the most environmentally beneficial direction.

The ERA-MIN Joint Call 2019 will address three segments of non-energy, non-agricultural raw materials:

- Metallic minerals
- Construction minerals
- Industrial minerals

The research, development and innovation topics to be funded under the ERA-MIN Joint Call 2019 address all aspects of the non-energy, non-agricultural raw materials life cycle, covering both primary and secondary resources.

Proposals focusing on one, or more, of the 27 Critical Raw Materials listed in 2017 (that will be reviewed and updated in 2020) by the European Commission<sup>1</sup> are encouraged.

Besides technological innovations, non-technological aspects will play an important role in paving the way to a circular economy.

The call focuses on four steps of the raw materials life cycle and horizontal cross-cutting topics. Nevertheless, following a systemic approach, other parts of the production cycle which are not mentioned explicitly (e.g. distribution, use, collection) can be included within project proposals.

Big data and ICT based tools play an important role across the whole product life cycle to increase the efficiency of raw materials supply (e.g. inventories, supply chain management, automation).

Special attention should be paid to reconnecting raw materials to society. Therefore, applicants should describe how their project will engage with the public.

For the **objectives and expected impacts** of the 5 main topics supported by ERA-MIN Joint Call 2019 please see the description below. It's encouraged to include cross cutting topics in all topics, as well as addressing more than one topic for a holistic view of the value chain.

❖ **Topic 1. Supply of raw materials from exploration and mining:** The availability of primary resources and waste from exploration and mining activities remains a major prerequisite to satisfy the growing global demand for raw materials. Therefore, exploration and mining will not disappear in a circular economy.

Within this topic we are seeking for new techniques, as well as better understanding, for the exploration and mining of primary and secondary resources that are necessary for the industrial supply.

Proposals can address new concepts, technologies and improved models to be used in mineral exploration aimed at understanding geophysical and geochemical processes and the evolution of the lithosphere, especially in Europe. Moreover, they can target comprehensive characterisation, mapping or remediation of abandoned mine sites, making them also potential sources of various raw materials, including valorisation of by- or co-products in complex mineral matrixes or historical stocks contained in tailings and spoil tips, that addresses environmental and social acceptability concerns.

---

<sup>1</sup> [COMMUNICATION FROM THE COMMISSION TO THE EUROPEAN PARLIAMENT, THE COUNCIL, THE EUROPEAN ECONOMIC AND SOCIAL COMMITTEE AND THE COMMITTEE OF THE REGIONS on the 2017 list of Critical Raw Materials for the EU \(COM/2017/0490 final\)](#)



Proposals should aim at significant or demonstrable progress towards the goal of responsible and sustainable mine development, through increasing the raw materials supply while reducing impacts on the environment. Within this approach, contributions on the reclamation of former mine sites are included.

Both onshore and offshore proposals will be supported (subject to national/regional regulations).

It is encouraged to incorporate for example social science contributions, environmental impact of mines and explorations, new business models, eco-efficient waste management and sustainable management of closed mines and quarries.

❖ **Topic 2. Design:** The design of products has a high impact on resource efficiency.

Within this topic we are seeking for proposals focusing on innovative product design that contribute to the efficient use of raw materials (eco-design), or the substitution of critical materials in products and components.

In addition to the design of products which use fewer raw materials, proposals can address new design concepts focusing on the circularity of products. This includes aspects like the extension of the product durability or the facilitation of its re-use, remanufacturing or recycling.

Attention should be paid to strategies and technologies for the substitution of 'substances of very high concern' (SVHCs) of the REACH regulation or substances for which a scarcity may be foreseen.

Applicants should be able to quantify the expected impact of the new product design on resource efficiency, using appropriate metrics and life cycle thinking.

❖ **Topic 3. Processing, Production and Remanufacturing:** Production efficiency and remanufacturing processes in a circular economy provide a high potential to increase resource efficiency for primary and secondary sources. A major potential to increase the efficient use of raw materials is provided by resource intensive processes.

Within a circular economy vision, waste occurring during the production phase could be recycled and therefore become a resource. As an alternative to the production of new products, used products can be remanufactured and therefore contribute to a higher efficiency of the raw materials use. To adapt the circular economy approach to production may require a re-design of complete industrial processes including new business models, e.g. for remanufactured products.

In this topic we are looking for innovative technologies or methods re-designing industrial processes. For instance, proposals could address challenging subjects like metallurgical processes for low-grade or non-conventional ore deposits, bio-leaching, advanced purification/extraction processes based on bio-, hydro- or pyro-metallurgy, or a combination of them. Therefore, a full understanding of the innovation and research needs across the life cycle is required to ensure that the greatest environmental benefits can be obtained.

Proposals should address reduction of waste and/or recycling of waste, like scraps, ashes, or industrial effluents, for more direct and less energy- and resource consuming processes.

Additionally, energy efficiency, environmental, and social impact could be considered.

Proposals should be of high impact both in terms of the market opportunity they address, and the environmental/societal benefits they will enable.

- ❖ **Topic 4. Recycling and Re-use of End-of-Life Products** (e.g. waste of electric and electronic equipment (WEEE), permanent magnets, complex metal alloys etc.). It is essential to turn the raw materials value chain into a materials cycle, where dissipation and waste are avoided as much as possible. A specific challenge is the recycling of raw materials from complex products. In this topic we are seeking for proposals to address this challenge through new concepts, technologies and services which increase the supply of raw materials, especially critical raw materials, recovered from products and components at the end of their life.

Proposals could, for instance, focus on collection and logistic methods; efficient and innovative separation, physical sorting and pre-treating techniques; innovative and efficient hydro- and pyro-metallurgical processes for critical raw materials separation and extraction from end-of-life products.

The marketing of used products or products made from recycling material may face economic, legal or psychological barriers which should be addressed if needed.

Innovative business models will be a major driver to overcome these barriers. It is expected that the assessment of the potential impact of the proposed innovation on raw materials efficiency considers the whole life cycle of the products.

Proposals could furthermore address energy efficiency, environmental issues or social impact.

- ❖ **Topic 5. Cross-cutting topics** that are relevant to any part of the raw materials life cycle can also be specifically addressed.

**Therefore, within this topic we are looking for proposals addressing non-technological innovations in order to increase the economic, environmental and social sustainability in the raw materials sector regarding:**

- **New business models,**
- **Improvement of methods or data for environmental impact assessment,**
- **Social acceptance and trust/public perception of raw materials.**

A major challenge in the raw materials sector is that entrepreneurs, with novel, high-impact and potentially transformative approaches to raw materials supply, may face barriers, such as substantive investments in existing infrastructure, making the system resistant to change.

Applicants are therefore encouraged to respond to this challenge and to develop new business models for a successful implementation of the developed technologies.

Development of new, efficient methods of Life Cycle Analysis and stock flows, also for environmental monitoring (including real time monitoring), are encouraged.

Gaining public trust in industrial activities is increasingly important in securing the raw materials supply in Europe from primary and secondary sources.

Understanding the public perception of raw materials related activities is supported.

To address the topic of social acceptance/public perception, adequate expertise both from social scientists and geoscientist/engineers/industry is essential.

Proposals will be evaluated by considering the potential presented for new, high-impact and




potentially transformative business models, environmental and/or societal benefits in the raw materials sector.

We encourage inclusion of cross-cutting topics in proposals addressing the other topics although topic 5 can be selected as the main topic.



The topics and sub-topic areas are shown in Appendix I. Some examples of project ideas under each sub-topic are presented but the proposals can address other ideas not mentioned in the sub-topics.

Background information on the research needs per topic and sub-topic areas was identified by the **ERA-MIN Research Agenda**, which can be downloaded from the ERA-MIN 2 website at the following link: [https://www.era-min.eu/sites/default/files/publications/era-min\\_research\\_agenda.pdf](https://www.era-min.eu/sites/default/files/publications/era-min_research_agenda.pdf), and are in line with the Strategic Implementation Plan of the European Innovation Partnership on Raw Materials etc.

**Please note that not all topics are supported by all Funding Organisations, see summary in Table 2.**

 means that there are some related restrictions. Always check with the corresponding national/regional Funding Organisation for restrictions.

**Table 2:** Summary of the main call topics supported by the Funding Organisations.

Country/region	Funding Organisation	Topic 1	Topic 2	Topic 3	Topic 4	Topic 5
Belgium / Brussels	<b>Innoviris</b>	NO	YES	YES	YES	YES
Belgium / Flanders	<b>FWO</b>	YES	YES	YES	YES	YES
Belgium / Flanders	<b>Hermesfonds</b>	YES	YES	YES	YES	NO
Belgium/ Wallonia	<b>SPW-Wallonia</b>	YES	YES	YES	YES	YES
Canada /Québec	<b>FRQNT</b>	YES	YES	YES	YES	YES
Chile	<b>CONICYT</b>	YES	YES	YES	YES	YES
Czech Republic	<b>TA CR</b>	YES	YES	YES	YES	YES
Finland	<b>Business Finland</b>	YES	YES	YES	YES	YES
France	<b>ADEME</b>	NO	YES	YES	YES	
France	<b>ANR</b>		YES	YES	YES	YES
Greece	<b>GSRT</b>	YES	YES	YES	YES	YES



Poland	<b>NCBR</b>	YES	YES	YES	YES	<b>NO</b>
Portugal	<b>FCT</b>	YES	YES	YES	YES	YES
Romania	<b>UEFISCDI</b>	YES	YES	YES	YES	YES
Slovakia	<b>SAS</b>	YES	YES	YES	YES	YES
Slovenia	<b>MIZS</b>	YES	YES	YES	YES	YES
South Africa	<b>DST</b>	YES				YES
Sweden	<b>Vinnova</b>	YES	YES	YES	YES	YES
Turkey	<b>TUBITAK</b>	YES	YES	YES	YES	YES

## 5. Who may apply

This call for proposals is aimed at all actors in the raw materials value chain, including universities, research institutes, companies, NGOs and public authorities that can contribute to the objectives of ERA-MIN 2 and who meet the eligibility criteria in section 7, as well as national/regional regulations (see Appendix IV).

A consortium must consist of at least three project partners eligible and requesting funding from the participating Funding Organisations of at least two different countries whereof one is an EU Member State or an Associated Country participating in the Call. Please note that not all participating Funding Organisations are EU Member States, namely Chile, Canada (Québec) and South Africa and the only EU Associated Country participating in the call is Turkey.

Organisations from countries/regions not participating in the Call can be partners of the consortium on the condition that they provide evidence of the availability of their own funds to cover their project activities.

There is no limit in the maximum consortium size, but it should be suitable for the level and complexity of the project and each partner should have a significant contribution for the transnational added value of collaboration.

Consortia involving both academic and industrial organisations are particularly encouraged to apply although purely public or private partnerships are possible.

Consortia may include players from the public and private sector with different backgrounds, e.g. physical scientists, engineers and technology developers, but also social scientists and policy advisors working closely together and covering different parts of the raw materials cycle.

Project consortia covering the entire innovation chain from idea to end-user/market are considered positive as well as consortia with actors traditionally working in other industries, so that more groundbreaking innovations can be created through new approaches.



ERA-MIN 2 supports gender equality, therefore applicants are encouraged to consider gender equality in, for example:

- Selection of project manager
- Composition of project group
- Division of work, power and influence in the project
- Involvement of target groups

## 6. What do we fund

ERA-MIN Joint Call 2019 addresses all aspects of the non-energy, non-agricultural raw materials life cycle, covering both primary and secondary resources. It is encouraged to include cross-cutting topics in topics 1-4, as well as addressing more than one topic to get a more holistic view of the value chain.


In line with ongoing efforts within a circular economy approach, ERA-MIN 2 will emphasise the contribution of proposals to the EU's transition to a circular economy by funding projects aiming at retaining the value of the raw materials that are used in products.

Overall, ERA-MIN 2 can fund basic research, applied research and experimental development projects that are 12-36 months long and address the scope and topics of the call. However, **not all funding agencies can fund all types of research**, see Table 3.



means that there are some related restrictions. Always check with the corresponding national/regional Funding Organisation for any restrictions and 'State Aid Rules'.

**Table 3:** Type of research and entities eligible for funding by the participating Funding Organisations.

Country /Region	Funding Organisation	Fundamental/ Basic research	Industrial/ Applied research	Experimental research	TRL	Type of entities eligible for funding
Belgium/ Brussels	<b>Innoviris</b>	NO	YES	YES	3-7	All
Belgium/ Flanders	<b>FWO</b>		NO	NO	1-2	Academia
Belgium/ Flanders	<b>Hermesfonds</b>	YES	YES	YES	2-7	Companies
Belgium/ Wallonia	<b>SPW-Wallonia</b>	NO	YES	YES	4-7	All
Canada/ Québec	<b>FRQNT</b>	YES	YES	YES	1-9	Academia
Chile	<b>CONICYT</b>	YES	YES	NO	1-7	Academia
Czech Republic	<b>TA CR</b>	NO	YES	YES	3-9	All
Finland	<b>Business Finland</b>	NO	YES	YES	4-8	All
France	<b>ADEME</b>	NO	YES	YES	4-7	All



Country /Region	Funding Organisation	Fundamental/ Basic research	Industrial/ Applied research	Experimental research	TRL	Type of entities eligible for funding
France	ANR	YES	YES	NO	1-5	All
Greece	GSRT	NO	YES	YES	3-8	All
Poland	NCBR	NO	YES	YES	2-9	⚠
Portugal	FCT	YES	YES	YES	1-8	All
Romania	UEFISCDI	YES	YES	YES	1-9	All
Slovakia	SAS	YES	YES	YES	1-7	Academia
Slovenia	MIZS	YES	⚠	NO	1-6	All ⚠
South Africa	DST	YES	YES	YES	1-9	All
Sweden	Vinnova	YES	YES	YES	1-7	All
Turkey	TUBITAK	YES	YES	YES	1-8	All

TRL – Technology Readiness Level (as defined in Appendix II).

## 7. Eligibility criteria

For a proposal to be assessed by the Scientific Evaluation Board (SEB) the following eligibility criteria must be met, as well as the national/regional funding regulations in Appendix IV:

Eligibility Criteria	
<b>Proposal submission deadline</b>	➤ The proposals must be submitted via electronic form through the ERA-MIN 2 Electronic Submission System, by the Lead Researcher of the consortium coordinator no later than <b>March 12, 2020 at 17:00:00 CET</b> .
<b>Consortium composition</b>	➤ Each consortium must comprise at least three independent legal entities eligible and requesting funding from the participating Funding Organisations of at least two different countries where at least one country is an EU Member State or an EU Associated Country (Turkey) named in this call.
<b>Applicant/ Coordinator</b>	➤ The coordinator of the consortium must request funding from, and be established in, a country or region participating in the Call.
<b>Applicant/ Lead researcher</b>	➤ A Lead Researcher can only represent the coordinator in one proposal (i.e. if a Lead Researcher coordinates one proposal, he/she can only participate in other proposals as a lead researcher/key personnel of a consortium partner).
<b>Applicant</b>	➤ Researchers from the participating Funding Organisations or of the Scientific Evaluation Board (SEB) cannot apply to this Call.





<b>Eligible consortium/applicant</b>	➤ Each partner requesting funding must comply with the national/regional funding rules and regulations of their respective Funding Organisation to ensure the eligibility of the consortium proposal (see Appendix IV). Please note that this may include sending additional information/documentation to your national/regional Funding Organisation.
<b>Consortium work effort balance</b>	➤ The total efforts of partners from one country in a proposal cannot exceed 70% of the total project efforts (measured in person-months (PM)). PM per partner should be clearly stated in the proposal.
<b>Project duration</b>	➤ The project duration should be a minimum of 12 months and should not exceed 36 months.
<b>Proposal templates</b>	➤ ERA-MIN Templates must be used, i.e. Forms A (Calibri, 11pt, single spaced; the pages' margins should be kept), Form B and Form C, Ethics issue table and CV's of lead researcher/key personnel. A Guide for Proposal Submission, including all templates, is available at <a href="https://www.era-min.eu/joint-call/era-min-joint-call-2019">https://www.era-min.eu/joint-call/era-min-joint-call-2019</a>
<b>Proposal length</b>	➤ The total proposal length (Form A) cannot exceed 30 pages, excluding the Gantt chart, the references and the Ethics issues table. A maximum of 8 images or tables can be included in the 30 pages length.
<b>Applicant requesting funding</b>	➤ All <b>applicants requesting funding</b> must provide a statement of commitment duly signed by the legal representative of the organisation <b>or</b> the Lead Researcher, <b>Form B</b> .
<b>Applicant not requesting funding</b>	➤ <b>Applicants not requesting funding</b> , or not eligible for national/regional funding, can be partners of the consortium on the condition that they provide evidence of the availability of their own funds to cover their costs by providing a signed statement duly signed by the legal representative of the organisation <b>or</b> the Lead Researcher, <b>Form C</b> .
<b>CV template</b>	➤ A maximum of three CVs (of lead researcher and two key personnel) per consortium partner is allowed and each ERA-MIN CV template cannot exceed two pages.
<b>Language</b>	➤ The language of the proposals is English.

Not all Funding Organisations can fund projects related to all topics, and funding eligibility criteria may differ between countries/regions (see Appendix IV).

Applicants are responsible for ensuring that the Funding Organisation for their country/region has confirmed its participation in the relevant topic and sub-topic for their proposal, and to check which type of organisation can be funded at what level of support and the maximum budget available.

A summary of some national/regional funding rules is provided in Table 2 and 3, as well as in the national/regional funding regulations (Appendix IV) but **applicants are obliged to check with their national/regional contact point (Table 1) for their national/regional funding regulations.**

## 8. Evaluation criteria and procedures

The evaluation procedures are designed to identify the best proposals in terms of scientific



excellence, impact, quality and efficiency on the implementation, as thoroughly and accurately as possible; and to undertake the assessment in a fair, transparent and homogeneous way for all proposals submitted in the Call.

The following is a schematic representation of the evaluation and decision-making process:

1. Proposal submitted via the Electronic Submission System (ESS).
2. The submitted proposals will be subject to a general, as well as a national/regional eligibility check performed by the Joint Call Secretariat (JCS) and by the Call Steering Committee (CSC), composed of representatives from the participating Funding Organisations, to confirm compliance with general and national/regional priorities, rules and regulations before the start of the international independent peer-review evaluation process.
3. Applicants are notified of the outcome of the overall eligibility check.
4. The quality assessment of the eligible proposals will be performed by the Scientific Evaluation Board (SEB) composed of international independent expert reviewers. This will result in a ranking of the proposals and recommendations for funding or not.
5. The CSC decides which projects will receive funding based on the ranking list and national/regional available budgets.
6. Applicants are notified of the funding decisions and receive feedback on the evaluation of their proposal.

Proposals will be evaluated based on three main evaluation criteria: 1) Scientific Excellence, 2) Impact and 3) Quality and Efficiency of the Implementation. Evaluation scores will be awarded to the three main evaluation criteria and not individually for the different sub-criterion.

#### 1. SCIENTIFIC EXCELLENCE

- Clarity and pertinence of the objectives;
- Soundness of the concept, and credibility of the proposed methodology;
- Extent that the proposed work is beyond the state of the art, and demonstrates innovation potential (e.g. ground-breaking objectives, novel concepts and approaches, new products, services or business and organisational models);
- Appropriate consideration of interdisciplinary approaches and, where relevant, use of stakeholder knowledge;

#### 2. IMPACT

- The extent to which the outputs of the project would contribute at the European and/or International level to expected impacts in line with the integrated strategy proposed in the EU Raw Materials Initiative (RMI) and the Strategic Implementation Plan of the European Innovation Partnership (EIP) on Raw Materials;
- Any substantial impacts that would enhance innovation capacity, create new market opportunities, strengthen competitiveness and growth of companies, address issues related to barriers/obstacles, and any framework conditions such as regulation, standards, public acceptance, workforce considerations, financing of follow-up steps, cooperation of other links in the value chain, or bring other important benefits for society;
- Quality of the proposed measures to exploit and disseminate the project results (including management of IPR), and to manage research data where relevant;
- Quality of the proposed measures to communicate the project activities to different target audiences;



- Support the development of technological solutions and services for the implementation of the Strategic Implementation Plan of the European Innovation Partnership on Raw Materials.
- How well the project results will benefit both women and men (or contribute to a gender equal societal development)

### 3. QUALITY AND EFFICIENCY OF THE IMPLEMENTATION

- Quality and effectiveness of the work plan, including extent to which the resources assigned to work packages are in line with their objectives and deliverables;
- Appropriateness of the management structures and procedures, including risk and innovation management;
- Quality and complementarity of the participants and extent to which the consortium as whole brings together the necessary expertise;
- How well the team (key persons) is composed regarding gender distribution, as well as the distribution of power and influence between women and men
- Appropriateness of the allocation of tasks, ensuring that all participants have a valid role and adequate resources in the project to fulfil that role.

Each criterion is scored out of 5:

**0** — The proposal fails to address the criterion or cannot be assessed due to missing or incomplete information (unless the result of an ‘obvious clerical error’).

**1— Poor:** the criterion is inadequately addressed or there are serious inherent weaknesses

**2—Fair:** the proposal broadly addresses the criterion but there are significant weaknesses

**3—Good:** the proposal addresses the criterion well but with a number of shortcomings

**4—Very good:** the proposal addresses the criterion very well but with a small number of shortcomings

**5—Excellent:** the proposal successfully addresses all relevant aspects of the criterion; any shortcomings are minor.

The threshold for individual criterion is 3. The overall rating is the sum of the individual criterion scores (0-15). The overall threshold for proposals, applying to the sum of the three individual scores, is 10. Proposals not meeting the thresholds will not be recommended for funding by the SEB.

### 9. How to apply

A joint transnational proposal shall be prepared in English by the consortium and submitted via the ERA-MIN 2 Electronic Submission System (<http://www.submission-era-min.eu/>) by the Lead Researcher representing the coordinator no later than **March 12, 2020 at 17:00:00 CET**.

If required by the national/regional regulations, submission forms or other documents must be submitted directly to the participating Funding Organisations according with their deadlines, no later than 10 working days after the proposal submission deadline mentioned above. **Please consult your regional/national contact point (Table 1) for further details.**

#### Registration

1. The coordinator (Partner 1), who will represent the consortium, will have to register at the



- ERA-MIN 2 Electronic Submission System ([coordinator registration link](#)) before submitting a proposal.
2. Once registered, the coordinator will receive a registration email with the login link ([coordinator login link](#)).
  3. The coordinator will need to register the partners of the consortium (name and e-mail).
  4. After registration, all the partners will receive an email to activate their account.
  5. With his/her account, each partner will enter his/her own profile ([partner login link](#)).

### *Proposal form*

The proposal form must be filled in by the coordinator, except for the partner's profiles and respective CVs.

ERA-MIN templates for the technical description of the proposal (30 pages, Calibri, 11pt, single spaced; the template's margins of the page should be kept) and annexes are available at <https://www.era-min.eu/joint-call/era-min-joint-call-2019>

Signed Statement of Commitments from all partners requesting funding (Form B) and Statements of Own Funding (Form C) from partners not requesting funding must be included as annexes to the proposal. The coordinator has the duty to ensure that Form B and Form C are signed in due time. Resubmitting the proposal before the submission deadline is possible.

### **10. Terms and conditions for grant agreement**

For proposals recommended for funding, the partners will be asked to contact the respective Funding Organisation for further instructions regarding national/regional internal procedures. The negotiation phase is carried out following the usual rules of each Funding Organisation.

Each beneficiary will have a separate funding contract/letter of grant according to national/regional regulations with the appropriate national/regional Funding Organisation. Changes to the composition of research consortia or to the budget cannot occur during the contract/letter of grant, unless there is an appropriate justification. The beneficiaries shall inform the JCS and the Funding Organisations of that project of any event that might affect the implementation of the project.

The partners of the projects selected for funding must fix a common project start date, which will be the reference date for annual and final project reports. It is expected that grant negotiations may take up to 3-4 months after the notification of results. The project should not start later than December 1, 2020, unless national/regional rules say otherwise.

The list of funded projects will be published on the ERA-MIN 2 website.

The beneficiaries of a project selected for funding must sign a **Consortium Agreement (CA)** for cooperation, preferably before the official project start date but no later than six months after the official project start date, considering that some Funding Organisations cannot conclude the grant agreements without a signed CA. Each Funding Organisation will indicate when they expect the CA and how to submit it. A copy of the duly signed CA should be sent to the JCS and the Funding Organisations if asked for.

Models of CA are available (<http://www.desca-2020.eu/>), but the consortium is free to define its own CA subject to applicable legal and regulatory provisions.

The national/regional Funding Organisations shall have the right to use documents, information and





results submitted by the research partners and/or to use the information and results according to their national/regional rules on IPR.

Beneficiaries must ensure that all project publications etc. include a proper acknowledgement to ERA-MIN 2, the European Commission, and the respective Funding Organisation.

On behalf of the consortium, the coordinators of the funded projects will submit **annual and final reports** in English to the JCS that contain information on scientific and administrative aspects. In addition, each beneficiary in a selected funded project must report to their respective national/regional Funding Organisation, according to their administrative funding rules. The beneficiaries are instructed to immediately contact the coordinator, the Funding Organisations involved and the JCS with any contingency that may arise.

If requested, the Lead Researcher of the consortium coordinator (or a representative of the project) is expected to attend meetings organised by ERA-MIN 2 (max 2 meetings will be arranged). In addition, the beneficiaries should participate and contribute to any communication activity initiated by ERA-MIN 2 in the funding period and beyond.

## 11. Open Access and Open Data

The optimisation of the impact of publicly-funded scientific research is of fundamental importance to improve conditions to i) minimise the time spent searching for information and accessing it, ii) be able to speed up scientific progress, and iii) make it easier to cooperate across and beyond the European Union.

Open Access recommendations for all scientific publications produced by the funded projects will support Green Open Access (immediate or delayed open access provided through self-archiving), and/or Gold Open Access (immediate open access provided by a publisher) only depending on cost eligibility. In the case of Green Open Access, partners will (as soon as possible and at the latest on publication) deposit a machine-readable electronic copy of the published version or final peer-reviewed manuscript accepted for publication in a repository for scientific publications. In addition, partners will ensure open access to the deposited publication and bibliographic metadata.

In relation to Open Data, the funded projects will be recommended to submit metadata on all the data resources directly generated by the project on the Raw Material Information System (RMIS) of JRC, as well as additional information on how these data will be exploited, if and how data will be made accessible for verification and re-use, and how it will be curated and preserved. Additionally, we encourage the researchers to register online at “The Green Best Practice Community” of JRC (<https://greenbestpractice.jrc.ec.europa.eu/>) and propose case studies and best practices. Metadata and additional information will be made publicly available via the ERA-MIN 2 website. ERA-MIN 2 will comply with the Protection of Personal Data Requirements by following the ethical standards and guidelines of Horizon 2020 and applicable EU and national law.



## APPENDIX I Sub-topic areas for research

<b>1. Supply of raw materials from exploration and mining</b>	
<b>1.1</b>	<p><b>Exploration, e.g.</b></p> <ul style="list-style-type: none"> <li>• Understanding primary and secondary raw materials resources for securing the supply chain,</li> <li>• Tools for identifying resources and improving mineral resource modelling,</li> <li>• Innovative approaches and tools for ore characterization</li> <li>• Concepts and methodologies for assessing mineral resource supply risks</li> </ul>
<b>1.2</b>	<p><b>Mining operations, e.g.</b></p> <ul style="list-style-type: none"> <li>• Smart and eco-efficient technologies for mining</li> <li>• Extraction of raw materials from historical dumps and tailings</li> <li>• Enhanced landfill mining</li> <li>• Technologies for more efficient and safer extraction of resources incl. intelligent mining</li> </ul>
<b>1.3</b>	<p><b>Mine closure and reclamation, e.g.</b></p> <ul style="list-style-type: none"> <li>• Remediation after mine closure with field demonstration at real-scale</li> <li>• Predictions of mine closure long-term performance</li> <li>• Long-term monitoring systems</li> </ul>
<b>2. Design</b>	
<b>2.1</b>	<b>Product design for increased raw material efficiency</b>
<b>2.2</b>	<b>Product design for reuse or extended durability of products</b>
<b>2.3</b>	<b>Product design to promote recycling (e.g. facilitation of dismantling)</b>
<b>2.4</b>	<p><b>Product design for critical materials substitution, e.g.</b></p> <ul style="list-style-type: none"> <li>• Developing products, services and technologies with same functionalities avoiding critical materials, or by substituting the functionality itself</li> <li>• Replace 'substances of very high concern' (SVHCs) of the REACH regulation</li> <li>• Reduce or avoid the use of materials with low abundance and/or difficult/risky supply</li> </ul>

<b>3. Processing, Production and Remanufacturing</b>	
<b>3.1</b>	<p><b>Increase resource efficiency in resource intensive production processes, e.g.</b></p> <ul style="list-style-type: none"> <li>• Increase material and energy efficiency of ore processing</li> <li>• Overcome metallurgical challenges for metal production from primary and secondary sources</li> <li>• Valorisation of by-products, co-products</li> <li>• Re-design production cycles, networks and cascades</li> </ul>
<b>3.2</b>	<p><b>Increase resource efficiency through recycling of residues or remanufacturing of used products and components, e.g.</b></p> <ul style="list-style-type: none"> <li>• Scrap metals</li> <li>• Residues from manufacturing</li> <li>• Tailings from mining</li> <li>• Innovative technologies and business models for remanufacturing</li> </ul>
<b>3.3</b>	<p><b>Increase resource efficiency using information and communication technologies (ICT), e.g.</b></p> <ul style="list-style-type: none"> <li>• Supply chain management across the whole life cycle</li> <li>• Management of production cycles, networks or cascades</li> <li>• Smart technologies for processing, production and remanufacturing (e.g. sensor-based sorting of metals scrap, efficient characterisation of used products)</li> </ul>
<b>4. Recycling and Re-use of End-of-Life products</b>	
<b>4.1</b>	<b>End-of-life products collection and (reverse) logistics</b>
<b>4.2</b>	<p><b>End-of-life products pre-processing: pre-treatment, dismantling, sorting, characterisation, e.g.</b></p> <ul style="list-style-type: none"> <li>• Efficient characterisation and separation of products and components for re-use or recycling</li> <li>• Overcome barriers for second-life products</li> </ul>
<b>4.3</b>	<p><b>Recovery of raw materials from End-of-life products, e.g.</b></p> <ul style="list-style-type: none"> <li>• Recover metals and rare earth elements from urban mines via innovative, clean and environmental-friendly processes (hydrometallurgy, pyrometallurgy...) and separation techniques</li> </ul>

4.4	<p><b>Increase recycling of End-of-Life products through information and communication technologies (ICT), e.g.</b></p> <ul style="list-style-type: none"> <li>• Databases and models on raw materials in buildings, infrastructure and products</li> <li>• IT-based tools for efficient management of supply chains across the whole life cycle</li> <li>• Smart recycling technologies (e.g. sensor-based sorting)</li> <li>• Simulation of different re-use and recycling pathways applying a life cycle perspective</li> </ul>
<p><b>5. Cross-Cutting Topics</b></p>	
5.1	<p><b>New business models (implementing circular economy aspects), e.g.</b></p> <ul style="list-style-type: none"> <li>• New business models for resource recovery, remanufactured products, product life extension, sharing platforms, etc</li> </ul>
5.2	<p><b>Improvement of methods or data for environmental impact assessment (e. g. LCA - life-cycle analysis)</b></p> <ul style="list-style-type: none"> <li>• Studies on flows of mineral resources (e. g. MFA - material-flow analysis)</li> </ul>
5.3	<p><b>Social acceptance and trust/public perception of raw materials, e.g.</b></p> <ul style="list-style-type: none"> <li>• Public perception for activities associated with raw materials supply</li> <li>• Standardized social science methodologies for gathering/analysing data in different countries</li> <li>• Case studies</li> </ul>

## **APPENDIX II Technology Readiness Level (H2020 definition)**

TRL 1 – basic principles observed

TRL 2 – technology concept formulated

TRL 3 – experimental proof of concept

TRL 4 – technology validated in lab

TRL 5 – technology validated in relevant environment

TRL 6 – technology demonstrated in relevant environment

TRL 7 – system prototype demonstration in operational environment

TRL 8 – system complete and qualified

TRL 9 – actual system proven in operational environment



### APPENDIX III Definitions

**Applicant:** is a legal entity, represented by a Lead Researcher that forms a consortium at the stage of proposal submission.

**Beneficiary:** is a legal entity, represented by a Lead Researcher, member of a consortium selected for funding that receive financial support from the respective national/regional Funding Organisation.

**Call:** Refers to the ERA-MIN Joint Call 2019 opening on November 28, 2019 with a total budget of €10 303 000.

**Call Steering Committee (CSC):** Comprises representatives of the Funding Organisations that have committed national/regional funds to support the selected R&I projects. It supervises the whole Call procedure and agrees on the final list of proposals recommended for funding. It supervises the activities of the Joint Call Secretariat.

**Consortium:** Group of legal entities, each represented by a Lead Researcher, that are part of a joint collaborative transnational R&I project proposal submitted to the Call or a project selected for funding.

**Coordinator:** One partner of the consortium represented by a Lead Researcher, who will be responsible for the internal scientific management of the project, intellectual property rights management, project reporting towards the JCS and CSC and will represent the consortium externally.

**Funding Organisations:** are responsible for providing funding under relevant rules and regulations to the beneficiaries from the respective country/region.

**Joint Call Secretariat (JCS):** Is responsible for the implementation of the Call and the follow-up phase until the funded projects and all reporting requirements have ended. All submitted proposals are collected by the JCS, which makes them available to the CSC and the reviewers of the Scientific Evaluation Board. The JCS handles the communication with the applicants, reviewers, CSC and beneficiaries. The JCS is hosted by FCT (Foundation for Science and Technology), in Lisbon (Portugal) with the support of Ptj (Germany) regarding the ESS.

**Key Personnel:** is a team member person of an applicant or a beneficiary.

**Lead Researcher:** is the main responsible person of a legal entity and is the contact point with the corresponding national/regional Funding Organisation and the JCS.

**Partners:** legal entities, each represented by a Lead Researcher within a department or institute from universities, research organisations, companies etc., forming a consortium.

**Scientific Evaluation Board (SEB):** Panel of internationally independent recognised scientific experts responsible for the quality assessment of the submitted proposals. SEB members will not submit or participate in proposals within this Call and must sign declarations of confidentiality and of conflict of interest.

## APPENDIX IV National/regional funding regulations

### Belgium/Brussels –Innoviris

#### a) Regional eligibility criteria

<b>Regional Contact Point</b>	Name: Beata Bibrowska, EU projects Manager E-mail: bbibrowska@innoviris.brussels Tel: +32(0) 474 29 69 34
<b>Eligible entities</b>	Universities, research institutes, SME's and Large companies, NGOs (associations for and not for profit), public entity. All organisation must be constituted in legal entity.  Specifications: <ul style="list-style-type: none"> <li>○ Private companies established in the Brussels Capital Region with a sustainable activity in this region based upon a sound business model. The entities have not received public funding for the same activities. Private entities can participate alone or with regional partner in the call</li> <li>○ Regional universities and research organisations can participate alone or with regional enterprise, association or public entity in the call,</li> <li>○ Brussels based associations active in the field will participate with regional enterprise or university in the call</li> <li>○ Public administrations can be funded partner in the call</li> </ul>
<b>Eligible topics</b>	2-5
<b>Eligible type of research and TRL</b>	Industrial/Applied Research and Experimental development/Innovation TRL-3-7
<b>Additional eligibility criteria</b>	<ul style="list-style-type: none"> <li>○ Each beneficiary develops entirely or partially its activities in Brussels Capital Region</li> <li>○ Each beneficiary will perform a research or innovation activity in the project</li> <li>○ The project will be innovative and will present the positive impact on regional economy and employment by valorisation of results in the region</li> </ul> <ol style="list-style-type: none"> <li>1. All applicants should demonstrate their viability and financial soundness regarding their own contribution to the project and the implementation of the results.</li> <li>2. The funding for public administrations, associations will depend on their role in the project and their structural activity. Innoviris checks these parameters before the submission of the project.</li> <li>3. <b>Parallel to ERA-MIN proposal, the submission of the proposal at regional level is compulsory. Proposals not submitted to Innoviris will not be eligible for funding.</b></li> </ol>

<b>Eligible costs</b>	<ul style="list-style-type: none"> <li>○ Personnel costs</li> <li>○ Operational costs</li> <li>○ Investment costs</li> <li>○ Indirect costs (10% of personnel +operational costs)</li> <li>○ Subcontracting</li> </ul>
-----------------------	--

b) Funding rates

Maximum funding percentages:

Type of research	Large Enterprises	Medium Enterprises	Small Enterprises	Academia, associations without economic activities, public authorities *
Industrial/Applied Research	65	75	80	50-100
Experimental development	40	50	60	50-100

\*Associations, public authorities -eligibility and funding rate confirmation after analysis of “declaration of economic activities”

**Belgium/Flanders – FWO**

a) Regional eligibility criteria

<b>Regional Contact Point</b>	Name: Toon Monbaliu Advisor research affairs Tel: +32 2 550 15 70 e-mail: <a href="mailto:eranet@fwo.be">eranet@fwo.be</a> <a href="http://www.fwo.be">www.fwo.be</a>
<b>Eligible entities</b>	The eligibility of the host institutions and involved researchers depends on their compliance with the FWO Research Project regulations, and more specifically regarding <a href="#">art. 10 – ‘contracting parties’</a> . In practice this comes down to a so-called ‘ZAP-position’ at an eligible main host institution.
<b>Eligible topics</b>	All
<b>Eligible type of research and TRL</b>	Only fundamental/basic research ( <b>TRL 1-2</b> ) will be funded by FWO in this call.



<b>Additional eligibility criteria</b>	<p>In order to form an eligible consortium, <b>it has to be composed of at least three project partners eligible and requesting funding from the participating Funding Organisations of at least three different countries</b>, whereas the general criteria only require 2 countries requesting funding. Non-compliance with this directive will inevitably lead to ineligibility.</p> <p>1) Project proposals have to be budgeted on 36 months maximum. No automatic extension is allowed in this phase.</p>
<b>Eligible costs</b>	<p>Funding money can be used for staff, consumables and equipment. The minimal and maximal allowed funding amounts per cost category, as applicable for the regular FWO-projects, are not applicable for the projects funded by FWO in ERA-NET.</p> <p>Overhead is not an eligible cost, nor should it be taken up in the financial/budget overview. Notwithstanding, the FWO pays the host institutions of a project directly 6% overhead on top of the funding amount.</p>

b) Funding rates

Maximum funding percentages:

<b>Type of research</b>	<b>Universities and research organisations</b>
<b>Fundamental/Basic Research</b>	100

**Belgium/Flanders -Hermesfonds**

a) Regional eligibility criteria

<b>Regional Contact Point</b>	<p>Name: Elsie De Clercq E-mail: <a href="mailto:elsie.declercq@vlaio.be">elsie.declercq@vlaio.be</a> Tel: +32 2 432 42 78</p>
<b>Eligible entities</b>	<p>Any enterprise, from a Flemish SME to the Flemish branch of a multinational company may request funding. The only condition is that the enterprise should have a legal personality upon signing the agreement. Furthermore, the enterprise should have the capacity to exploit the result to a sufficient extent in Flanders and hence create enough economic impact in the form of employment and investments.</p> <p>Note: Flemish research centres cannot apply, but they can be subcontractor of the Flemish enterprise.</p>



<b>Eligible topics</b>	1-4
<b>Eligible type of research and TRL</b>	Fundamental/Basic Research, Industrial/Applied Research and Experimental Research TRL 2-7
<b>Additional eligibility criteria</b>	<ul style="list-style-type: none"> <li>At least € 25.000 funding</li> <li>Before initiating a funding request for international projects, the applicant should contact VLAIO – Flemish applicants need to provide a regional ERA-NET addendum to VLAIO (through the VLAIO electronic application system see <a href="http://www.vlaio.be">www.vlaio.be</a> “Subsidies &amp; financiering” – “Onderzoeksproject” or “ontwikkelingsproject”</li> <li>The maximum amount of funding for one project is € 500.000</li> </ul>
<b>Eligible costs</b>	The budget of the Flemish industrial partner consists of own payroll costs, other costs (i.e. direct and indirect costs), costs large subcontractors, large costs, costs research partners

#### b) Funding rates

Maximum funding percentages:

Type of research	Large Enterprises	Medium Enterprises	Small Enterprises	Universities and research organisations
<b>Fundamental/Basic Research</b>	Maximum 60	Maximum 60	Maximum 60	Subcontractor of the Flemish enterprise
<b>Industrial/Applied Research</b>	Maximum 60	Maximum 60	Maximum 60	Subcontractor of the Flemish enterprise
<b>Experimental development</b>	25 + 10 cooperation bonus	25 + 10 cooperation bonus + 10 ME bonus	Maximum 50	Subcontractor of the Flemish enterprise

#### Belgium/Wallonia –SPW-Wallonia

##### a) Regional eligibility criteria

<b>Contact Point</b>	Name: Pierre Demoitie E-mail: <a href="mailto:pierre.demotie@spw.wallonie.be">pierre.demotie@spw.wallonie.be</a> Tel: 32 81 33 45 40
<b>Eligible entities</b>	Universities SMEs Research centres
<b>Eligible topics</b>	All

<b>Eligible type of research and TRL</b>	Industrial/Applied Research and Experimental Research 4-7
<b>Additional eligibility criteria</b>	Universities must work together with a SME or a Research Centre
<b>Eligible costs</b>	Personnel costs Equipment Materials and supplies costs Subcontracting Dissemination Travel expenses  according the Walloon rules

b) Funding rates

Maximum funding percentages:

Type of research	Large Enterprises	Medium Enterprises	Small Enterprises	Universities (1) and research organisations (2)
<b>Industrial/Applied Research</b>	Depending from the TRL, from the number of partners and from the type of cooperation according the Walloon rules			(1) 100 (2) 75
<b>Experimental development</b>				

Canada/Québec- FRQNT

a) National eligibility criteria

<b>National Contact Point</b>	Name : Laurence Martin Gosselin Responsable de programmes aux partenariats internationaux E-mail : <a href="mailto:Laurence.martingosselin@frq.gouv.qc.ca">Laurence.martingosselin@frq.gouv.qc.ca</a> Tel : (001) (418) 643-8560 #3455
<b>Eligible entities</b>	An eligible candidate is a university researcher or a college researcher (academia) in the field of natural sciences, mathematical sciences or engineering. Refere to the <a href="#">complete list of reaserch fields</a> covered by the FRQNT to validate your field.  <b>Eligibility of the applying candidates</b> An eligible candidate is a university researcher or a college researcher.  A <u>university researcher</u> is a person who:



	<p>a) receives a salary:</p> <ol style="list-style-type: none"> <li>i. as a regular professor or a contracted professor, in a university recognized by the FRQ to manage funding,</li> <li>ii. as a full-time researcher, with a PhD., in a university-affiliated CIUSSS, CISSS or other public institution within the health and social services network that is recognized by the FRQ to manage funding;</li> </ol> <p>AND</p> <p>b) is affiliated with a Québec university in which he/she is qualified to act as the sole supervisor of graduate students<sup>1</sup> and independently lead research projects. The following individuals also qualify for university researcher status.</p> <p>Individuals at the beginning of their career who meet criteria a) and hold a position that will enable them to meet criterion b) pending the end of administrative processes and delays also qualifies as university researcher</p> <p>A <u>college researcher</u> is a person who has a PhD and who is employed in the equivalent of a full-time position in one or several college-level training institutions recognized by the FRQ to manage funding or Québec college centres for technology transfer (CCTT).</p> <p>A college researcher must also possess the professional autonomy required to supervise research projects and hold:</p> <ol style="list-style-type: none"> <li>a) a position as a college-level training institution professor, OR</li> <li>b) a position as a CCTT researcher, OR</li> <li>c) a position in a college-level training institution in which at least 75% of their time is dedicated to research activities.</li> </ol> <p><u>The following individuals are not eligible:</u> Individuals who seem to meet the criteria above and who are retired.</p>
<b>Eligible topics</b>	All
<b>Eligible type of research and TRL</b>	Fundamental/Basic Research, Industrial/Applied Research and Experimental Research TRL 1-9



<p><b>Additional eligibility criteria</b></p>	<p><b><u>Prior contact with the FRQNT</u></b> Applying candidates must submit their requested funding, in the <a href="#">budget form</a>, for their part in the project, at <a href="mailto:programmes.internationaux@frq.gouv.qc.ca">programmes.internationaux@frq.gouv.qc.ca</a>, before the relevant ERA-MIN 2 deadlines. The FRQNT considers the budget form as part of the proposal. Refer to the form for the specific rules on budget.</p> <p><b>Multiple proposals</b> A researcher can receive funding from the FRQNT for only one project in the ERA-MIN 2 call. It is allowed for a researcher to submit more than one proposal to ERA-MIN 2, if he or she won't jeopardize his or her consortium knowing this single funded project rule.</p> <p><b>Applicable policies</b> Candidates and funding holders have to comply with the <a href="#">FRQ Common General Rules</a>, with research ethics policies applicable to their project, with the <a href="#">Politique de diffusion en libre accès des Fonds de recherche du Québec</a> (French only), as well as with the <a href="#">FRQ Policy on Responsible conduct of research</a>.</p> <p>Through the Fonds de recherche du Québec open access policy for the dissemination of research, the FRQNT is promoting open access to the outcomes of its funded research and is ensuring their quick dissemination and free access to the scientific community, potential users, policy-makers and the general public. Complementary information's and rules concerning funded projects and open access can be found in the <a href="#">FRQ Common General Rules</a>.</p>
<p><b>Eligible costs</b></p>	<p>See the <a href="#">budget form</a>. If the institution is eligible to receive indirect cost of research, as described in section 8.2 of the <i>FRQ Common General Rules</i>, they will be added to the amount.</p> <p>All eligible costs are listed in the <a href="#">FRQ Common General Rules</a>.</p>

<b>Maximum amount of requested funding</b>	<p>The maximum amount that can be requested to the FRQNT is 65 000€ per year, for up to 3 years, and per project (non-renewable). The total amount the FRQNT is committed to fund is 390 000€.</p> <p>All amounts will be granted in Canadian currency according to the exchange rates of the date the results of the call will be announced by ERA-MIN 2.</p>
<b>Additional information</b>	<p><b>Candidates are encouraged to inform their host institution (office of research) about their participation to the present call.</b></p> <p><b>Forms to be submitted after the ERA-MIN 2 selection process</b></p> <p>Only the candidates in a founded project will have to create a portfolio on the FRQnet and fulfil the appropriate form. Candidates in a founded project will have to fill an “Undertaking and Acknowledgement” before receiving the funds.</p>

b) Funding rates

Maximum funding percentages:

Type of research	Universities and research organisations
Fundamental/Basic Research	100
Industrial/Applied Research	100
Experimental development	100

**Chile – CONICYT**

a) National eligibility criteria

<b>National Contact Point</b>	Name: Andrea Cibotti E-mail: <a href="mailto:acibotti@conicyt.cl">acibotti@conicyt.cl</a>
<b>Eligible entities</b>	Universities and research organizations
<b>Eligible topics</b>	All
<b>Eligible type of research and TRL</b>	Fundamental/Basic Research, Industrial/Applied Research TRL 1-7
<b>Additional eligibility criteria</b>	Maximum contribution requested from CONICYT: €85.000 per year (for three years) For more information see <a href="https://www.conicyt.cl/pci/">https://www.conicyt.cl/pci/</a>

<b>Eligible costs</b>	Personnel costs Equipment Materials and supplies costs Subcontracting Dissemination Travel expenses
-----------------------	--

a) Funding rates

Maximum funding percentages:

Type of research	Universities and research organisations
Fundamental/Basic Research	100
Industrial/Applied Research*	100

**Czech Republic**

a) National eligibility criteria

<b>National Contact Point</b>	Name: Kristina Nehilčová Tel: +420 234 611 629 E-mail: <a href="mailto:kristina.nehilcova@tacr.cz">kristina.nehilcova@tacr.cz</a> <a href="https://www.tacr.cz">https://www.tacr.cz</a>
<b>Eligible entities</b>	<u>Enterprises</u> (according to Annex 1 of <a href="#">the Regulation</a> ) <u>Research organizations</u> (according to Article 2 paragraph 83 of <a href="#">the Regulation</a> ) Enterprises who act as <u>natural persons</u> according to Annex 1 of <a href="#">the Regulation</a> engaged in an economic activity pursuant to Act no. 455/1991 coll. on Trades (Trade Act).
<b>Eligible topics</b>	All
<b>Eligible type of research and TRL</b>	Industrial/Applied Research, Experimental Development TRL 3-9
<b>Additional eligibility criteria</b>	<ul style="list-style-type: none"> <li>• The project proposal has to include a clear description of the exploitation plan and results</li> <li>• the aim of the project has to be relevant to the overall aim of the funding <a href="#">programme EPSILON</a></li> <li>• the industrial research and experimental development share correspond to the activities of the Czech partner described in the project proposal</li> <li>• the costs are eligible (based on the rules stated below)</li> </ul>

	<ul style="list-style-type: none"> <li>• the requested funding meets the national regulations for aid intensity</li> <li>• the applicants have published the financial statements for the years 2016, 2017, 2018</li> </ul> <p>The aid intensity for each Czech applicant in the project is determined based on the type of entity according to the Regulation (see table below) and at the same time must not exceed the maximum permissible aid intensity for the Czech part of the project, which is 70 % of the total eligible costs.</p> <p><u>Supported results</u> Projects that achieve at least one of the types of results in the link below can be supported in this Call. The type of the <a href="#">result</a> has to be clearly described in the project proposal</p> <p><u>Mandatory forms to be submitted</u> The Czech applicants are requested to submit:</p> <ul style="list-style-type: none"> <li>• <a href="#">A Sworn statement of the applicant</a>;</li> <li>• Completed "TACR Application Form" Excel file;</li> <li>• if the applicant plans to achieve the "NmetS" type of result, the "<a href="#">Confirmation of the Certification authority for NmetS results</a>" needs to be attached</li> <li>• if the applicant plans to achieve the "Patent" type of result, patent search must be substantiated</li> </ul> <p>All documents proving the eligibility of the Czech applicant (mentioned above) shall be submitted via the TACR data box (TACR data box ID: afth9xp) within the same deadline as the project proposals. Please fill in the subject line as: „Horizon2020 - ERA-MIN 2 Call 2019 - prokázání způsobilosti - akronym projektu“.</p>
<p><b>Eligible costs</b></p>	<ul style="list-style-type: none"> <li>• personnel costs (including scholarships)</li> <li>• subcontracting costs (max. 20% of total eligible costs throughout the whole project period)</li> <li>• other direct costs (write-offs, protection of intellectual property, operating expenses, travel costs, consumables)</li> <li>• indirect costs (overheads) - full cost/flat rate 25% (indirect costs in the respective year are calculated as 25% of the sum of the personnel costs and other direct costs in the same year)</li> </ul> <p>These specific categories of eligible costs are defined under Article 17 of the General Terms &amp; Conditions <b>Investment costs are NOT eligible in this joint call.</b></p>



<b>Additional information</b>	<p><b>Useful documents and links:</b></p> <ul style="list-style-type: none"> <li>- <a href="#">TACR website about ERA - MIN</a></li> <li>- <a href="#">programme EPSILON</a> (only in Czech)</li> <li>- <a href="#">definitions of supported outcomes</a> (only in Czech)</li> <li>- Funding rules for the Czech applicant for ERA-NET cofund (available on the TACR website)</li> <li>- The Guide for the Czech applicants (available on the TACR website)</li> </ul> <p>TACR excludes the disbursement of individual aid to an enterprise:</p> <ul style="list-style-type: none"> <li>• against which a recovery order has been issued which is unpaid</li> <li>• meeting the definition of an “enterprise in difficulties”</li> <li>• which has not met the obligation to publish the financial statements for the years 2016, 2017, 2018 in the respective register - the so-called “Veřejný rejstřík”</li> </ul>
-------------------------------	---

b) Funding rates

Maximum funding percentages:

Type of research	Large Enterprises	Medium Enterprises*	Small Enterprises*	Universities and research organisations**
<b>Industrial/Applied Research</b>	50***	60***	70***	100
<b>Experimental development</b>	25***	35***	45***	100

\* Note: An SME is defined in Annex 1 of the Regulation

\*\* Research organisations must satisfy the definition in the Act and the Framework.

\*\*\* a bonus for effective collaboration can be added (the aid can be increased by up to 15% if the applicant fulfills the conditions according to the Regulation Article 25)

**Finland-Business Finland**

a) National eligibility criteria

<b>National Contact Point</b>	Name: Kari Keskinen E-mail: <a href="mailto:kari.keskinen@businessfinland.fi">kari.keskinen@businessfinland.fi</a> Tel. +358 50 5577843
<b>Eligible entities</b>	Universities, R&D institutes, SME’s and Large companies, Organisations must be legal entities.
<b>Eligible topics</b>	All
<b>Eligible type of research and TRL</b>	Industrial/Applied research and Experimental development TRL 4-8

<b>Additional eligibility criteria</b>	Consortia must include at least two industrial partners (SMEs or large companies). There must be one partner with a parallel project and other company can be a funder or in-kind partner.
<b>Eligible costs</b>	The following costs are eligible: <ol style="list-style-type: none"> <li>1. personnel costs</li> <li>2. indirect costs</li> <li>3. costs of equipment and devices</li> <li>4. subcontracting</li> <li>5. travel expenses</li> </ol> For more information see: <a href="https://www.businessfinland.fi/suomalaisille-asiakkaille/etusivu/">https://www.businessfinland.fi/suomalaisille-asiakkaille/etusivu/</a>

b) Funding rates

Maximum funding percentages:

Type of research	Large Enterprises	Medium Enterprises	Small Enterprises	Universities and research organizations
<b>Industrial/Applied Research</b>	40	50	50	60
<b>Experimental development</b>	Loan 50	Loan 70	Loan 70	/

**France- ADEME**

a) National eligibility criteria

<b>Contact Point</b>	Name: Rachel BAUDRY E-mail: rachel.baudry@ademe.fr Tel: (33) 2 41 91 40 70
<b>Eligible entities</b>	Universities, R&D institutes, SME's and Large companies, NGOs (associations, foundations, etc.). Organisations must be <b>legal entities</b> .
<b>Eligible topics</b>	2-5
<b>Eligible type of research and TRL</b>	Industrial/Applied Research and Experimental development TRL 4-7
<b>Additional eligibility criteria</b>	ADEME can only finance projects on <b>metallic resources and industrial minerals</b> . Projects on construction materials are not eligible. All French applicants must submit a national funding application, with financial information only, immediately after the submission of the proposal. The national application form will be sent by ADEME to the coordinator of each submitted proposals.

<b>Eligible costs</b>	<p>ADEME's eligible costs are detailed in the following documents (available in French):</p> <ul style="list-style-type: none"> <li>• <a href="#">Règles générales d'attribution et de versement des aides de l'ADEME</a></li> <li>• <a href="#">Régime d'aides de l'ADEME à la recherche, au développement et à l'innovation</a></li> </ul> <p>It includes salaries, overheads, travel expenses, devices, equipment and operational costs.</p>
-----------------------	---

b) Funding rates

Maximum funding percentages:

Type of research	Large Enterprises	Medium Enterprises	Small Enterprises	Universities and research organisations
<b>Fundamental/Basic Research</b>	Not applicable	Not applicable	Not applicable	Max. 70%
<b>Industrial/Applied Research*</b>	Max. 50	Max. 60	Max. 70	Max. 50
<b>Experimental development*</b>	Max. 25	Max. 35	Max. 45	Max. 50

**France –ANR**

a) National eligibility criteria

<b>National Contact Point</b>	Name: Massimiliano Picciani Chargé de mission scientifique ANR Tel : +33 1 73 54 81 96 E-mail: <a href="mailto:massimiliano.picciani@anr.fr">massimiliano.picciani@anr.fr</a>
<b>Eligible entities</b>	Universities and research organizations Large, medium and small enterprises Private non-profit organisations: see ANR funding regulations
<b>Eligible topics</b>	<p>Projects concerning the following topics and sub-topics:</p> <p>Topic 1: only sub-topics 1.1 and 1.3 Topics 2, 3, 4, 5: all sub-topics</p> <p>Projects concerning the following subjects for all topics are not eligible:</p> <ul style="list-style-type: none"> <li>- CDW (construction and demolition wastes)</li> <li>- Off-shore exploration</li> </ul>
<b>Eligible type of research and TRL</b>	Fundamental/Basic Research, Industrial/Applied Research TRL 1-5
<b>Additional eligibility criteria</b>	For French partners: see the National annex <b><i>“Annexe nationale ANR ERA-MIN 2 édition 2020”</i></b> available on ANR website

	<a href="http://www.agence-nationale-recherche.fr/era-min2_2020">http://www.agence-nationale-recherche.fr/era-min2_2020</a>
<b>Eligible costs</b>	See ANR funding regulations (“Règlement relatif aux attributions des aides de l’ANR”, in the table below shortly indicated as RF) <a href="http://www.agence-nationale-recherche.fr/RF">http://www.agence-nationale-recherche.fr/RF</a>

## Greece- GSRT

### a) National eligibility criteria

<b>National Contact Point</b>	Name: Michael Kotsias E-mail: <a href="mailto:m.kotsias@gsrt.gr">m.kotsias@gsrt.gr</a> Tel: +30 213 1300115
<b>Eligible entities</b>	GSRT potentially supports all legal entities, private and public, namely: <ul style="list-style-type: none"> <li>• Private – SME</li> <li>• Private – large companies</li> <li>• Non-profit research organisation</li> <li>• Higher education institution</li> <li>• Public research organisation</li> <li>• Public organisation</li> </ul> <p>GSRT does not support individuals and individual enterprises</p> <p><b><u>Applicants may submit in the current call, if they are enterprises, up to two (2) proposals from the same enterprise and for Public research Institutes and Universities up to (2) proposals at the level of the same Laboratory or School or Institute or Department.</u></b></p>
<b>Eligible topics</b>	All
<b>Eligible type of research and TRL</b>	The aided part of the research and development project shall completely fall within one or more of the following categories (COMMISSION REGULATION (EU) No 651/2014 article 25): (a) industrial research; (b) experimental development; (c) feasibility studies  TRL 3-8 (according to COMMISSION REGULATION (EU) No 651/2014/Definitions for Aid for Research, Development and Innovation, pages 24-26/par. 83-96)

<b>Additional eligibility criteria</b>	<p>The duration of a funded project is 24- 36 months.</p> <p>Upper limit of the total public funding will be 200.000 € per project (including indirect costs). Please note that this amount can be increased to 250.000 € per project if Greek partner assumes the project coordination. The maximum state aid intensity will be calculated according to the provisions of the European state aid rules and regulations in force (type of research activity, size of the participating enterprise, collaborative research).</p>
<b>Eligible costs</b>	<p>(a) personnel costs: researchers, technicians and other supporting staff to the extent employed on the project.</p> <p>(b) costs on fixed assets i.e. b1) costs of instruments and equipment to the extent and for the period used for the project. Where such instruments and equipment are not used for their full life for the project, only the depreciation costs corresponding to the life of the project, as calculated on the basis of generally accepted accounting principles are considered as eligible and b2) costs for buildings and land, to the extent and for the duration period used for the project. With regard to buildings, only the depreciation costs corresponding to the life of the project, as calculated on the basis of generally accepted accounting principles are considered as eligible. For land, costs of commercial transfer or actually incurred capital costs are eligible.</p> <p>(c) costs of contractual research, knowledge and patents bought or licensed from outside sources at arm's length conditions, as well as costs of consultancy and equivalent services used exclusively for the project.</p> <p>(d) additional general costs and other operating expenses, including costs of materials, supplies, travel expenses, organization of meetings, dissemination/publicity costs, audit costs, incurred directly as a result of the project implementation.</p> <p>(e) indirect costs = flat rate 15% of gross personnel costs excluding VAT = 15%* (a-(VAT of a)). Indirect costs are eligible for all legal entities and include costs that do not incur directly as a result of the project implementation (e. g. administrative and management costs, utility costs).</p> <p>! Note: Please bear in mind that scientific management costs are eligible under category (a) whereas administrative and financial/legal management costs fall under eligible categories (e) or (d)-audit costs only.</p> <p>- Subcontracting is allowed. This will be clarified in the guidelines of the national call.</p>

b) Funding rates

Maximum funding percentages:

Type of research	Private Sector*	Universities and research organisations
<b>Industrial/Applied Research*</b>	50	The aid intensity can reach 100% for performing non-economic activities (§19 of article 2.1.1 in «Framework for State aid for research and development and innovation» (2014/C 198/01)).
<b>Experimental development*</b>	25	
<b>Feasibility studies</b>	50	

\* **Private Sector:** *The aid intensities for industrial research and experimental development may be increased up to a maximum aid intensity of 80 % of the eligible costs if certain conditions are fulfilled, see COMMISSION REGULATION (EU) No 651/2014 articles 25, 28, 29) <https://eur-lex.europa.eu/legal-content/EN/TXT/PDF/?uri=CELEX:32014R0651&from=EN> More detailed:*

*The aid intensities for industrial research and experimental development may be increased up to a maximum aid intensity of 80% of the eligible costs as follows:*

*(a) by 10 percentage points for medium-sized enterprises and by 20 percentage points for small enterprises;*

*(b) by 15 percentage points if one of the following conditions is fulfilled:*

*(i) the project involves effective collaboration:*

*— between undertakings among which at least one is an SME, or is carried out in at least two Member States, or in a Member State and in a Contracting Party of the EEA Agreement, and no single undertaking bears more than 70 % of the eligible costs, or*

*— between an undertaking and one or more research and knowledge-dissemination organisations, where the latter bear at least 10 % of the eligible costs and have the right to publish their own research results;*

*(ii) the results of the project are widely disseminated through conferences, publication, open access repositories, or free or open source software.*

*-The aid intensity for feasibility studies may be increased by 10 percentage points for medium-sized enterprises and by 20 percentage points for small enterprises.*

**More details in the national/regional call announcement:**

Submission at the national level is required at a later stage. A national call will be published to support the approved, at the transnational level, proposals only. Detailed information on the procedure and the funding rules will be provided at the GSRT website in the guidelines of the national call, during the submission period.

For more information please contact the NCP.

**Poland – NCBR**

a) National eligibility criteria

<b>National Contact Point</b>	Name: Dominika Mickiewicz Email: <a href="mailto:dominika.mickiewicz@ncbr.gov.pl">dominika.mickiewicz@ncbr.gov.pl</a> Tel. +48 22 39 07 139
-------------------------------	---

<b>Eligible entities</b>	Research Organizations; Micro, Small, Medium and Large Enterprises. Polish entities must be registered in Poland The project consortium with Polish participation must <b>contain at least one Polish enterprise</b> (with declared budget and tasks) to be eligible for funding.
<b>Eligible topics</b>	1-4
<b>Eligible type of research and TRL</b>	Industrial/Applied Research and Experimental development TRL 2-9
<b>Additional eligibility criteria</b>	Funding quota of Polish participants can be up to 100% for research organizations. In the case of enterprises, funding quota will be decided on a case-by-case basis depending on the size of the company, type of research/development, risk associated with the research activities and commercial perspective of exploitation, under <i>the Regulation of the Minister of Science and Higher Education of 25 February 2015 on criteria and rules on granting state aid and "de minimis" aid by the National Centre for Research and Development, published in Journal of Laws item 299, 2015</i>
<b>Eligible cost</b>	<ol style="list-style-type: none"> <li>1. personnel costs</li> <li>2. costs of instruments and equipment, technical knowledge and patents</li> <li>3. costs for buildings and land</li> <li>4. costs of subcontracting</li> <li>5. other operating costs</li> <li>6. additional overheads <math>6 = (1+2+3+5) * \max 25\%</math>.</li> </ol> corresponding to the national funding rules  Other type of activities (e.g. coordination, dissemination, management) are not eligible for funding as separate tasks. They can be included in an appropriate cost category within research tasks.

b) National funding rates

Maximum funding percentages:

Type of research	Large Enterprises	Medium Enterprises	Small Enterprises	Universities and research organisations
<b>Industrial/Applied Research</b>	Up to 50+15 (max 65)	Up to 50+10+15 (max 75)	Up to 50+20+15 (max 80)	Up to 100

<b>Experimental development</b>	Up to 25+15 (max 40)	Up to 25+10+15 (max 50)	Up to 25+20+15 (max 60)	Up to 100
---------------------------------	-------------------------	----------------------------	----------------------------	-----------

## Portugal – FCT

### a) National eligibility criteria

<b>National Contact Point</b>	Name: Ana Luísa LAVADO E-mail: analuisa.lavado@fct.pt Tel: [+351] 21 392 4396 Name: Dina CARRILHO E-mail: dina.carrilho@fct.pt Tel: [+351] 21 392 4381
<b>Eligible entities</b>	The organisations must be registered in Portugal. For detailed information consult the “ <b>Regulation on Projects Funded Solely by National Funds</b> ” at: <a href="http://www.fct.pt/apoios/projectos/regulamentofundosnacionais.phtml.pt">www.fct.pt/apoios/projectos/regulamentofundosnacionais.phtml.pt</a>
<b>Eligible topics</b>	All
<b>Eligible type of research and TRL</b>	Fundamental/Basic Research; Industrial/Applied Research; Experimental Development TRL 1-8
<b>Additional eligibility criteria</b>	The funding to the Portuguese participation is limited in a transnational proposal as described at: <a href="http://www.fct.pt/apoios/cooptrans/eranets/eramin2/index.phtml.pt">www.fct.pt/apoios/cooptrans/eranets/eramin2/index.phtml.pt</a> Each Portuguese institution must sign a “Declaração de compromisso” which must be sent, by e-mail, to the FCT’s contact person no later than 10 working days after the proposal submission deadline (12 <sup>th</sup> March 2020).
<b>Eligible cost</b>	The eligible costs are detailed in the Regulation on Projects Funded Solely by National Funds at: <a href="http://www.fct.pt/apoios/projectos/regulamentofundosnacionais.phtml.pt">www.fct.pt/apoios/projectos/regulamentofundosnacionais.phtml.pt</a>
<b>Additional information</b>	<b>Prior contact with the FCT</b> Each applying organisation should submit their requested funding and costs justification, in the ERA-MIN Financial plan Excel file, for their part in the transnational project, before the ERA-MIN 2 proposal deadline, to the national contact person. Refer to the Regulation on Projects Funded Solely by National Funds. When defining the transnational project starting date, please consider that the payment of the pre-financing to beneficiaries is only expected to occur from 1 <sup>st</sup> October 2020 onwards however the transnational project starting date may be determined since 1 <sup>st</sup> July 2020.

### b) National funding rates



Type of research	Large Enterprises	Medium Enterprises	Small Enterprises	Universities, research organisations and other non-profit-organisations
Fundamental/ Basic research	50	50	50	100
Industrial/Applied Research	50	50	50	100
Experimental development	50	50	50	100

### Romania- UEFISCDI

#### a) National eligibility criteria

<b>Contact Point</b>	Name Mihaela Manole E-mail: <a href="mailto:mihaela.manole@uefiscdi.ro">mihaela.manole@uefiscdi.ro</a> Tel: (+40) 21 3023863
<b>Eligible entities</b>	Eligible entities for funding are universities, public institutions, R&D national institutions, joint-stock companies, SME's and Large companies, NGOs (associations, foundations, etc.), others.
<b>Eligible topics</b>	All
<b>Eligible type of research and TRL</b>	1-9
<b>Additional eligibility criteria</b>	Funding rates vary in accordance with state aid legislation. For more information : <a href="http://uefiscdi.gov.ro/articole/4536/Pachet-de-informatii-ERANETERANET-Cofund.html">http://uefiscdi.gov.ro/articole/4536/Pachet-de-informatii-ERANETERANET-Cofund.html</a>
<b>Eligible costs</b>	a. Staff costs; b. Logistics expenses - Capital expenditure; - Expenditure on stocks - supplies and inventory items; - Expenditure on services performed by third parties cannot exceed 25 % of the funding from the public budget. The subcontracted parts should not be core/substantial parts of the project work; c. Travel expenses; d. Overhead (indirect costs) is calculated as a percentage of direct costs: staff costs, logistics costs (excluding capital costs and cost for subcontracting) and travel expenses. Indirect costs will not exceed 20 % of direct costs.

b) Funding rates

Maximum funding percentages:

Type of research	Large Enterprises	Medium Enterprises	Small Enterprises	Universities and research organisations
Fundamental/Basic Research	100	100	100	100
Industrial/Applied Research	Up to 50+15 (max 65)	Up to 60+15 (max 75%)	Up to 70+10 (max 85)	100
Experimental development	Up to 25+15 (max 40)	Up to 35+15 (max 50)	Up to 40+15 (max 65)	100

**Slovakia - SAS**

a) National eligibility criteria

<b>National Contact Point</b>	<p>Name: Mr. Martin Novák E-mail: <a href="mailto:mnovak@up.upsav.sk">mnovak@up.upsav.sk</a> Phone: +421 2 5751 0 119</p> <p>Name: Ms. Zuzana Panisová E-mail: <a href="mailto:panisova@up.upsav.sk">panisova@up.upsav.sk</a> Phone: +421 2 5751 0 245</p>
<b>Eligible entities</b>	<p>Only research Institutes of the Slovak Academy of Sciences are eligible organisations for funding by SAS (up to 100%). Applicants from other Slovak R&amp;D centres have to cover the project costs from their own sources (Letter of Commitment). In addition to this, teams outside of SAS (universities and/or other organisations) can be consortium members but not the coordinator of the consortium.</p> <p>Eligibility of principal investigator or other research team member - Each researcher of the core research team of a project consortium Slovak partner (other than the Principal Investigator) must have a job contract with or a fellowship with such a Slovak project partner, lasting until the end of the project or beyond. The principal Investigator of the research team of a project consortium Slovak partner must be a senior researcher having a job contract with such a project partner, lasting until the end of the granted project or beyond.</p>
<b>Eligible topics</b>	All
<b>Eligible type of research and TRL</b>	Basic Research, Applied Research and Experimental Development TRL 1-7
<b>Additional eligibility criteria</b>	Eligible costs as defined in the ERA-MIN Joint Call 2018 for Proposals text can be applied unless they are in conflict with the SAS Financial Rules for awarding grants for research projects. Priority is given to the SAS Financial Rules. <a href="https://www.sav.sk/index.php?lang=sk&amp;doc=services-news&amp;source_no=25&amp;news_no=7114">https://www.sav.sk/index.php?lang=sk&amp;doc=services-news&amp;source_no=25&amp;news_no=7114</a>

<b>Eligible costs</b>	Direct costs (DC): Personnel (max. of 15% of all DC or max. of 30% of all DC, if Slovak team is a coordinator of consortium), Consumables, Equipment (max. 40% of DC) and Travel costs. Indirect costs (IC - overheads): max. 20 % of DC. Total eligible costs = DC + IC. Training costs shall not be defined as a separate category, but is included in other costs items.
<b>Additional information</b>	<p>More details in the national/regional call announcement: Initial funding commitment: up to 120.000 € Anticipated number of funded projects: 1 Maximal annual budget per project: 40.000 €</p> <p>National phase – Submission of the proposal at the national level will be carried out once the international evaluation and the ranking list have been performed and endorsed by the ERA-MIN 2018 Joint Call Steering Committee (CSC) and the Slovak project partner has been informed by the project consortium coordinator and invited by SAS to submit the proposal to it (Formular MVTs). The Presidium of SAS makes the final decision concerning the approval of funding (according to internal rules of SAS)</p> <p>Further guidance: <a href="http://www.sav.sk">www.sav.sk</a>; Act No. 133 Act of 19 February 2002 on the Slovak Academy of Sciences; Financial rules for awarding SAS grants for research projects in the framework of ERA.Net Programme for research institutes of SAS; Principles of allocation of funds for the institutes of SAS to support projects in the field of international scientific cooperation</p> <p>For more information please contact the NCP.</p>

b) Funding rates

Maximum funding percentages:

Type of research	Universities and research organisations
Fundamental/Basic Research	Up to 100
Industrial/Applied Research	Up to 100
Experimental development	Up to 100

**Slovenia - MIZS**

a) National eligibility criteria

<b>Contact Point</b>	Name: Doroteja Zlobec
----------------------	-----------------------

	E-mail: doroteja.zlobec@gov.si Tel: +386 1 478 46 24
<b>Eligible entities</b>	<p><b>Eligibility of a partner as a beneficiary institution:</b> research organizations as defined in the national <a href="#">Research and Development Act</a> (<i>Zakon o raziskovalni in razvojni dejavnosti – ZRRD</i>). All participating institutions have to be registered in the Slovenian Research Agency register of research institutions (Informacijski sistem o raziskovalni dejavnosti v Sloveniji - Sicris).</p> <p><b>Eligibility of principal investigator and other research team members:</b> The project activities of the Slovenian partner have to be under the supervision of the <u>primary investigator/primary researcher</u> who fulfills the requirements for project leader as defined in Art. 29 of the national Decree on norms and standards used to determine funding for research activities financed from the Republic of Slovenia budget (<i>Uredba o normativih in standardih za določanje sredstev za izvajanje raziskovalne dejavnosti, financirane iz Proračuna Republike Slovenije, Uradni list RS, št. 103/11, 56/12, 15/14, 103/15, 27/17 in 9/18</i>) hereinafter: <i>Decree on criteria and standards</i>). The criteria are further determined in the <a href="#">Rules on Determining the Fulfillment of Conditions for a Research Project Leader</a> (<i>Pravilnik o kriterijih za ugotavljanje izpolnjevanja pogojev za vodjo raziskovalnega projekta</i>). All participating researchers have to be <u>registered in the Slovenian Research Agency register of researchers</u> (Sicris) and <u>must have available research hours</u>.</p>
<b>Eligible topics</b>	All
<b>Eligible type of research and TRL</b>	Basic research, applied research- The type of research conducted by Slovenian researchers must be defined and explained in the project proposal (e.g. in the Comments on budget section). TRL 1-6
<b>Additional eligibility criteria</b>	<p><b>Consortium with Slovenian partners must involve at least 3 different countries participating at ERA-MIN 2019 Call to be eligible!</b></p> <p>All Slovenian applicants must refer to the guidelines for Slovenian applicants published on the MIZS webpage (<a href="http://www.mizs.gov.si/si/javne_objave_in_razpisi/javni_razpisi/">http://www.mizs.gov.si/si/javne_objave_in_razpisi/javni_razpisi/</a>).</p> <p><b>Legal basis – national regulation</b> State Administration Act (Zakon o državni upravi (Uradni list RS, št. 113/05 - UPB4, 89/07 - Odl.US, 126/07 - ZUP-E, 48/09, 8/10 - ZUP-G, 8/12 - ZVRS-F, 21/12, 47/13, 12/14, 90/14 in 51/16)) - Article 16 and 39; Public Finance Act (Zakon o javnih financah (Uradni list RS, št. 11/11- uradno prečiščeno besedilo, 14/13 – popr., 101/13, 55/15 – ZfisP, 96/15 – ZIPRS1617 in</p>

13/18)) - Article 106. j; Regulation on the procedure of standards and manners to allocate means for the promotion of the evolutionary programme and the preferential tasks (Uredba o postopku, merilih in načinih dodeljevanja sredstev za spodbujanje razvojnih programov in prednostnih nalog (Uradni list RS, št. 56/11)); Implementation of the Republic of Slovenia's Budget for 2018 and 2019 Act (Zakon o izvrševanju proračunov Republike Slovenije za leti 2018 in 2019 (ZIPRS 1819) (Uradni list RS, št. 71/17 in 13/18-ZJF-H)); Interguity and Prevention of Corruption Act (Zakon o integriteti in preprečevanju korupcije (Uradni list RS, št. 69/11 – uradno prečiščeno besedilo)); Resolution on the National Research and Development Programme 2011-2020 (Resolucije o raziskovalni in inovacijski strategiji Slovenije 2011-2020 (RISS) (Uradni list RS, št. 43/11)), Research and development Act (Zakona o raziskovalni in razvojni dejavnosti (Uradni list RS, št. 22/06 – UPB1, 61/06-ZDru-1, 112/07, 9/11,57/12-ZPOP-1A in 21/18-ZNOrg)); Decree on norms and standards used to determine funding for research activities financed from the Republic of Slovenia budget (Uredbe o normativih in standardih za določanje sredstev za izvajanje raziskovalne dejavnosti, financirane iz Proračuna Republike Slovenije (Uradni list RS, št. 103/11, 56/12, 15/14, 103/15, 27/17 in 9/18)); Rules on criteria for establishing compliance with the conditions for being the head of a research project (Pravilnik o kriterijih za ugotavljanje izpolnjevanja pogojev za vodjo raziskovalnega projekta, Uradni list RS št. 53/16); Community Framework for State Aid for Research and Development and Innovation the provisions of the Community Framework for State Aid for Research and Development and Innovation (OJ EU C 198, 27. 6. 2014) (Okvir za državno pomoč za raziskave in razvoj ter inovacije (2014/C 198/01)); National scheme for state aid in Research and Development (Program za spodbujanje raziskav in razvoja Ministrstva za izobraževanje, znanost in šport na področju znanosti 2016-2020, št. 631-1/2016-1 z dne 8. 1. 2016); National strategy of open access to scientific publications and research data in Slovenia 2015-2020 (Nacionalna strategije odprtega dostopa do znanstvenih objav in raziskovalnih podatkov v Sloveniji 2015-2020, št. 60300-5/2015/5 z dne 3. 9. 2015).

**National contracting negotiations:** will commence after the projects are selected for funding on the level of the transnational call. National documentation, including evidence of the starting date of the transnational project (in the form of a Consortia Agreement or statement on the starting date by the transnational project coordinator), will be a prerequisite for signing the contract on national level. All Slovenian applicants are strongly advised to contact the Slovenian National Contact Person before preparing

	proposals for application.
<b>Eligible costs</b>	<p><b>Total national funding:</b> max. 420.000,00 EUR including VAT</p> <p><b>Total requested funding per project:</b> for all Slovenian partners within one consortium must not exceed 70.000,00 EUR per year (210.000,00 EUR for the total project duration of 36 months).</p> <p><b>Eligibility of costs:</b> MIZS will fund all eligible costs of Slovenian researchers participating in successful transnational projects, recommended for funding in accordance with the <i>Decree on criteria and standards</i>. Eligible costs are defined based on the FTE value according to the Slovenian Research Agency's research project categorization (A, B, C or D based on the research conducted). Eligible costs must be directly related to the research conducted and should include <u>personnel</u>, <u>material</u> and <u>equipment</u> costs as elements of the FTE. Indirect costs are eligible. The value is calculated based on the FTE value of category A, B,C, or D research projects, under the condition that costs under each of the specific FTE elements are appropriately decreased (by a max. of 20% for indirect costs). Providing the stipulated conditions are met, the Public Procurement Act (Zakon o javnem naročanju (Uradni list RS, št. <a href="#">91/15</a> in <a href="#">14/18</a>) applies.</p> <p><b>Period of eligibility of public expenditures:</b> as of budgetary year 2020 until the end of the budgetary year 2022.</p> <p><b>Period of eligibility of expenditures on the project:</b> From the starting date of the transnational project stipulated in the consortium agreement for a period of 36 months, with a prescribed additional 30 day period for the payment of invoices related to the project costs. The period of eligibility of expenditures on the project can only start from the date the national contract enters into effect. The exact duration of the project will be defined in the contract between MIZS and the selected Slovenian partner, after the consortium agreement between the selected consortium partners enters into force.</p>

## b) Funding rates

**Funding:** 100 % for research organization (such as universities, public and private research institutes) whose financed activity is non-economic in accordance with the provisions of Community Framework for State Aid for Research and Development and Innovation. Wide dissemination of all research results on a non-exclusive and non-discriminatory basis is required.

For research organizations whose financed activity is economic in accordance with the provisions of Community Framework for State Aid for Research and Development and Innovation the provisions of the Community Framework for State Aid for Research and Development and Innovation (OJ EU C 198, 27. 6. 2014) and the national scheme for state aid in Research and Development: [Program za spodbujanje raziskav in razvoja](#)

[Ministrstva za izobraževanja, znanost in šport](#) na področju znanosti, št 631-1/2016-7, 8.1.2016, applies.

Maximum funding percentages:

Type of research	Large Enterprises	Medium Enterprises	Small Enterprises	Universities and research organisations
Fundamental/Basic Research	65	75	80	non-economic 100
Industrial/Applied Research	65	75 %	80	non-economic 100

### South Africa - DST

a) National eligibility criteria

<b>Contact Point</b>	Name: Mr Toto Matshediso Deputy Director: Strategic Partnerships Department of Science and Technology E-mail: toto.matshediso@dst.gov.za Tel: (+27)12 843 6339
<b>Eligible entities</b>	South African citizens and non-South African citizens but working in a South African institution such as the Science Councils, institutions of higher learning, universities, small, medium and large enterprises in the private sector and national system of innovation organisations involved in R&D
<b>Eligible topics</b>	1 and 5 (Topics 2, 3 and 4 have restrictions and applicants are requested to contact the DST prior to application)
<b>Eligible type of research and TRL</b>	Fundamental/Basic Research, Industrial/Applied Research and Experimental development TRL 1-9
<b>Additional eligibility criteria</b>	It is mandatory for applicants to present their application project outline firstly to DST in order to ascertain the strategic alignment with the country's National Development Plan and the objectives of the Department

<b>Eligible costs</b>	<p>Direct costs:</p> <p>Travel and Daily subsistence allowance including accommodation</p> <p>The DST will cover travel costs in line with the guidelines of South African government regulations.</p> <p>Consumables and supplies</p> <p>Any consumables necessary for the implementation of the project may be considered as direct eligible costs. Consumables are only eligible costs under the project if bought after the start date of the project.</p> <p>Costs of personnel</p> <p>DST will cover personnel cost to be incurred during project implementation.</p>
-----------------------	---

b) Funding rates

Maximum funding percentages:

Type of research	Large Enterprises	Medium Enterprises	Small Enterprises	Universities and research organisations
<b>Fundamental/Basic Research</b>	Up to 80	Up to 90	Up to 90	90
<b>Industrial/Applied Research</b>	Up to 80	Up to 90	Up to 90	90
<b>Experimental development</b>	Up to 80	Up to 90	Up to 90	90

**Sweden – Vinnova**

a) National eligibility criteria

<b>National Contact Point</b>	Name: Susanne Gylesjö E-mail: Susanne.Gylesjo@Vinnova.se Tel. +46 (0)8 473 3187
<b>Eligible entities</b>	Universities, R&D institutes, SME's and Large companies, NGOs (associations, foundations, etc.). Organisations must be <b>legal entities</b> .
<b>Eligible topics</b>	All
<b>Eligible type of research and TRL</b>	Fundamental/Basic Research, Industrial/Applied Research and Experimental Development TRL 1-7
<b>Additional eligibility criteria</b>	



<b>Eligible costs</b>	<p>Vinnova's grant is a contribution to the project's total eligible costs or parts thereof. The following costs are eligible (see link below for limitations):</p> <ol style="list-style-type: none"> <li>1. personnel costs,</li> <li>2. costs of equipment, land and buildings,</li> <li>3. costs of consultants and licenses etc.,</li> <li>4. other direct costs including travel expenses, and</li> <li>5. indirect costs.</li> </ol> <p>For more information see <a href="https://www.vinnova.se/en/apply-for-funding/rules-for-our-funding/terms-and-conditions-for-our-funding/">https://www.vinnova.se/en/apply-for-funding/rules-for-our-funding/terms-and-conditions-for-our-funding/</a> and <a href="https://www.vinnova.se/en/apply-for-funding/rules-for-our-funding/state-aid-to-companies/">https://www.vinnova.se/en/apply-for-funding/rules-for-our-funding/state-aid-to-companies/</a></p>
-----------------------	---

a) National funding rates

Maximum funding percentages:

Type of research	Large Enterprises	Medium Enterprises	Small Enterprises	Universities and research organisations
<b>Fundamental/Basic Research</b>	100	100	100	100
<b>Industrial/Applied Research*</b>	50	60	70	100
<b>Experimental development*</b>	25	35	45	100

\* Additional funding can be granted if special conditions are met, see <https://www.vinnova.se/globalassets/huvudsajt/sok-finansiering/regler-och-villkor/dokument/tabell-stodnivaer-statligt-stod.pdf>.

**Turkey- TUBITAK**

a) National eligibility criteria

<b>Contact Point</b>	Name: Hale AY E-mail: hale.ay@tubitak.gov.tr Tel: + 90 312 298 18 47
<b>Eligible entities</b>	Small, medium and large enterprises, universities, institutions and research organisations
<b>Eligible topics</b>	All
<b>Eligible type of research and TRL</b>	Fundamental/Basic Research, Industrial/Applied Research and Experimental development TRL 1-8

<b>Additional eligibility criteria</b>	At the same time as the proposal submission to the ERA-MIN 2 ESS, the project coordinator of Turkish team in the consortium must apply to TUBITAK via project application system of TUBITAK (uidb-pbs.tubitak.gov.tr). All Turkish partners in the same international project should submit one application form to national application system
<b>Eligible costs</b>	Personnel, travel, equipment/tool/software, consultancy and service procurement, consumables.
<b>Additional information</b>	<p>TUBITAK will avoid double funding (overlapping with other international (EU) or national funding) and will not grant projects or parts of projects already funded.</p> <p>Mandatory acknowledgement for publication or dissemination activity resulting from the granted projects must acknowledge TUBITAK funding even after the end of the project by stating the project no. The logo of the TUBITAK cannot be used in any outputs of the project.</p> <p>The successful projects will be supported by TÜBİTAK 1071 Programme - Support Programme for Increasing Capacity to Benefit from International Research Funds and Participation in International R&amp;D Cooperation. The purpose of the 1071 programme is to support research and innovation activities of the Turkish stakeholders via enabling the cooperation of academy and industry for the international R&amp;D projects.</p> <p>For more information, see <a href="https://www.tubitak.gov.tr/sites/default/files/256_sayili_bk_islenmis_hali-1071-1_0.pdf">https://www.tubitak.gov.tr/sites/default/files/256_sayili_bk_islenmis_hali-1071-1_0.pdf</a></p> <p><b>It is highly recommended that the NCP should be contacted during the preparation of the project</b></p>

b) Funding rates

Maximum funding percentages:

Type of research	Large Enterprises	Medium Enterprises	Small Enterprises	Universities and research organisations
Fundamental/Basic Research	60	75	75	100
Industrial/Applied Research	60	75	75	100
Experimental development	60	75	75	100